

Sold



15 Highbury Boulevard, Baldivis



Luxurious double-storey residence superbly located on Highbury Boulevard

Positioned in a classy enclave of executive properties high up on the boulevard, this sanctuary was built with sophistication, style and convenience in mind.

Flowing over an impressive 584sqm this north-facing, ex-display home offers the ideal family lifestyle with plenty of parks, schools, shops and walking tracks that connect effortlessly to all of your essential amenities.

Starting on the ground floor is 3 queen/king-sized bedrooms, all with extra-large built-in robes. A separate theatre room, a large home office and a well-appointed central kitchen overlooking the alfresco, dining and family room. Laundry with loads of cupboard space and a double garage with remote door and side access for boat or trailer.

 4  2  4 

584 m²

Price	SOLD
Property Type	Residential
Property ID	214
Land Area	584 m ²
Floor Area	269.41 m ²

Agent Details

Tony Wrobluskie - 0407
655 429

Office Details

Advantas Property Group
Suite 13/3 Statesman
Parade Baldivis, WA, 6171
Australia

0895 690 960

Located on the second level, is a large master suite with stunning ensuite, private lounge room, both with sliding door access to a large balcony overlooking the stunning Highbury Park that captures both sunrise and sunset.

First Floor Features

- * Theatre room
- * Family room
- * Large dining room
- * Study or home office
- * Central kitchen with Alfresco views
- * Ducted Reverse Cycle Air Conditioning
- * Laundry
- * Double Garage
- * 3 Large Bedrooms with double sliding robes

Second Storey Features

- * Private lounge room
- * Master Bedroom & ensuite
- * Ducted Reverse Cycle Air Conditioning
- * Spacious balcony with stunning views

Outside features:

- * Large alfresco area
- * Spacious Lawn with Reticulation
- * Room for pool or workshop

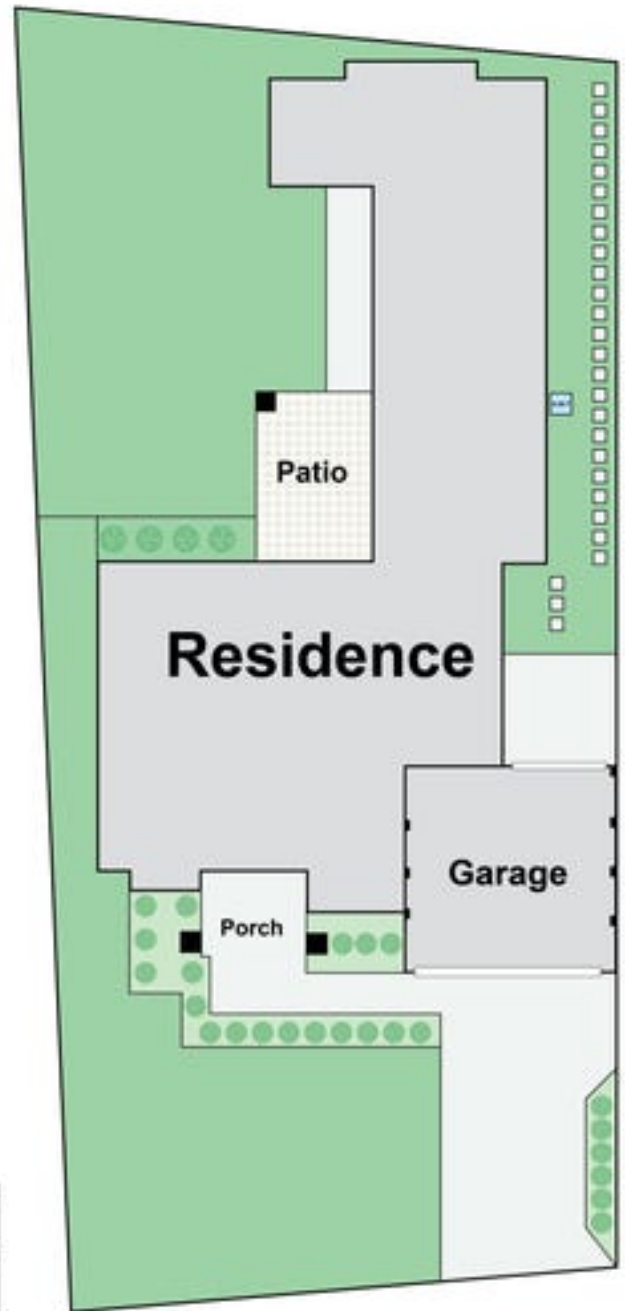
Call Tony today 0407 655 429 and book a private inspection.

This private estate, off Baldivis Road in Baldivis, contains some of the highest land between the ocean and the hills. It is 43km south of the Perth CBD and just 8km from the delightful beaches of Safety Bay.

Can't view? No Problem, check out the 3d virtual tour.

verified whether or not that information is accurate and do not have any belief in one way or the other in its accuracy. We do not accept any responsibility to any person for its accuracy and do no more than pass it on. All interested parties should make and rely upon their own inquiries in order to determine whether or not this information is in fact accurate.

Total Approx. Floor Area 260sqm



15 Highbury Boulevard, Baldivis 6171

Whilst every attempt has been made to ensure the accuracy of the floor plan contained here, measurements are approximate and no responsibility is taken for any error, omission or misstatement. This plan is for illustrative purposes only and should be used as such by any prospective purchaser or tenant.



ADVANTAS
PROPERTY GROUP